



Vulcan Encapsulated Seals: Bespoke Inspection Machine

Features:

- Instant quantity count through imaging software.
- Exceptionally accurate and precise measurements – 3-16 Microns using 3x 50mp cameras and bespoke software to Vulcan Seals. Cross-section measured at 0.5 Degree increments (minimum of 720 measurements per ring) with the number of measurements increasing as the size of 'O'-Ring increases.
- Visual highlighting of products identified as out of tolerance or with defects. Simple Red & Green colour coding used to prevent any confusion.
- Instant reporting which shows the Inside Diameter & Cross Section measurements of every ring measured, numbered accordingly.
- Split detection function which can identify either partial or full splitting of either the core or encapsulation, or both if is the case.
- Capacity to inspect several million rings per year due to the speed of the process.

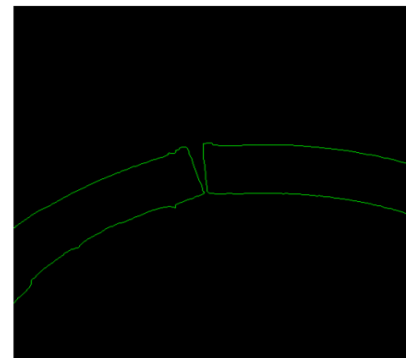
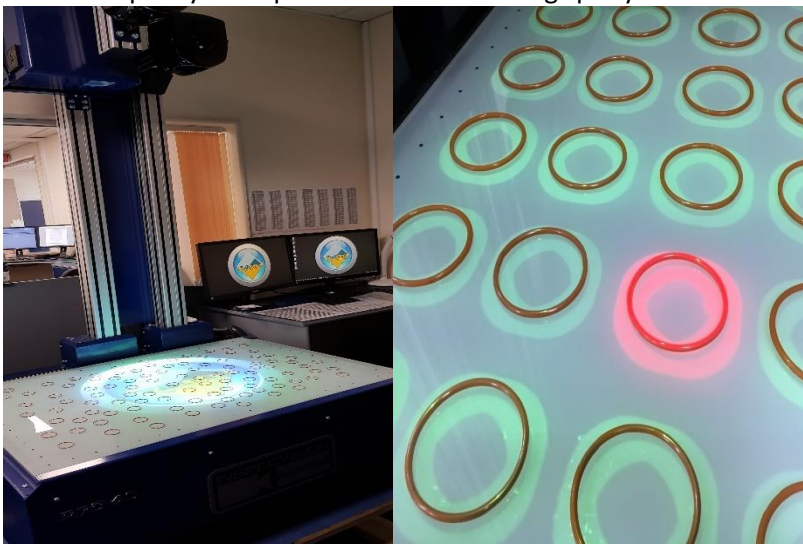


Illustration 3: Split Core Measurements

Partially Split Core



Illustration 4: Partially Split Core

VULCAN ENGINEERING LTD

Report A

Customer:

Operator:

Inspection Date:

Works Order No:

Customer Order No:

Part No:

Customer Part No:

Report Summary:

Part Thickness:

(Unverified) Luis

27/07/2018 (13:14:24)

Items Failed:

0

3.530000

Items Measured:

0

3.530000

Items Missing:

0

Extra Holes:

0

Deviation:

0.000000

Name	Entity	Radius	Dimension	Normal	Measured	Deviation	Standard deviation	Tolerance	Alignment	Status
ItemNo 52 CSD	Circle	Circle	Dia	3.53	3.58	0.13	0.04	+0.15/-0.08	Vertical	Pass
ItemNo 53 CSD	Circle	Circle	Dia	3.53	3.53	0.1	0.06	+0.15/-0.08	Vertical	Pass
ItemNo 54 CSD	Circle	Circle	Dia	3.53	3.58	0.05	0.04	+0.15/-0.08	Vertical	Pass
ItemNo 55 CSD	Circle	Circle	Dia	3.53	3.58	0.15	0.06	+0.15/-0.08	Vertical	Pass
ItemNo 56 CSD	Circle	Circle	Dia	3.53	3.57	0.04	0.04	+0.15/-0.08	Vertical	Pass
ItemNo 57 CSD	Circle	Circle	Dia	3.53	3.55	0.02	0.04	+0.15/-0.08	Vertical	Pass
ItemNo 58 CSD	Circle	Circle	Dia	3.53	3.5	-0.03	0.06	+0.15/-0.08	Vertical	Pass
ItemNo 59 CSD	Circle	Circle	Dia	3.53	3.58	0.06	0.06	+0.15/-0.08	Vertical	Pass
ItemNo 60 CSD	Circle	Circle	Dia	3.53	3.62	0.09	0.06	+0.15/-0.08	Vertical	Pass
ItemNo 61 CSD	Circle	Circle	Dia	3.53	3.58	0.05	0.06	+0.15/-0.08	Vertical	Pass
ItemNo 62 CSD	Circle	Circle	Dia	3.53	3.56	0.03	0.06	+0.15/-0.08	Vertical	Pass
ItemNo 63 CSD	Circle	Circle	Dia	3.53	3.62	0.09	0.05	+0.15/-0.08	Vertical	Pass
ItemNo 64 CSD	Circle	Circle	Dia	3.53	3.51	-0.02	0.03	+0.15/-0.08	Vertical	Pass
ItemNo 65 CSD	Circle	Circle	Dia	3.53	3.58	0.03	0.05	+0.15/-0.08	Vertical	Pass
ItemNo 66 CSD	Circle	Circle	Dia	3.53	3.6	0.07	0.06	+0.15/-0.08	Vertical	Pass
ItemNo 67 CSD	Circle	Circle	Dia	3.53	3.61	0.08	0.07	+0.15/-0.08	Vertical	Pass
ItemNo 68 CSD	Circle	Circle	Dia	3.53	3.61	0.08	0.09	+0.15/-0.08	Vertical	Pass
ItemNo 69 CSD	Circle	Circle	Dia	3.53	3.61	0.08	0.07	+0.15/-0.08	Vertical	Pass
ItemNo 70 CSD	Circle	Circle	Dia	3.53	3.6	0.07	0.04	+0.15/-0.08	Vertical	Pass
ItemNo 71 CSD	Circle	Circle	Dia	3.53	3.61	0.08	0.06	+0.15/-0.08	Vertical	Pass
ItemNo 72 CSD	Circle	Circle	Dia	3.53	3.66	0.13	0.08	+0.15/-0.08	Vertical	Pass
ItemNo 73 CSD	Circle	Circle	Dia	3.53	3.64	0.11	0.05	+0.15/-0.08	Vertical	Pass
ItemNo 74 CSD	Circle	Circle	Dia	3.53	3.61	0.08	0.07	+0.15/-0.08	Vertical	Pass
ItemNo 75 CSD	Circle	Circle	Dia	3.53	3.63	0.1	0.06	+0.15/-0.08	Vertical	Pass
ItemNo 76 CSD	Circle	Circle	Dia	3.53	3.58	0.05	0.03	+0.15/-0.08	Vertical	Pass
ItemNo 77 CSD	Circle	Circle	Dia	3.53	3.6	0.07	0.05	+0.15/-0.08	Vertical	Pass
ItemNo 78 CSD	Circle	Circle	Dia	3.53	3.65	0.12	0.05	+0.15/-0.08	Vertical	Pass
ItemNo 79 CSD	Circle	Circle	Dia	3.53	3.58	0.05	0.06	+0.15/-0.08	Vertical	Pass
ItemNo 80 CSD	Circle	Circle	Dia	3.53	3.48	-0.05	0.06	+0.15/-0.08	Vertical	Pass
ItemNo 81 CSD	Circle	Circle	Dia	3.53	3.62	0.09	0.11	+0.15/-0.08	Vertical	Pass
ItemNo 82 CSD	Circle	Circle	Dia	3.53	3.65	0.12	0.04	+0.15/-0.08	Vertical	Pass
ItemNo 83 CSD	Circle	Circle	Dia	3.53	3.58	0.05	0.05	+0.15/-0.08	Vertical	Pass
ItemNo 84 CSD	Circle	Circle	Dia	3.53	3.56	0.13	0.04	+0.15/-0.08	Vertical	Pass
ItemNo 85 CSD	Circle	Circle	Dia	3.53	3.61	0.08	0.04	+0.15/-0.08	Vertical	Pass
ItemNo 86 CSD	Circle	Circle	Dia	3.53	3.6	0.08	0.06	+0.15/-0.08	Vertical	Pass
ItemNo 87 CSD	Circle	Circle	Dia	3.53	3.64	0.11	0.07	+0.15/-0.08	Vertical	Pass
ItemNo 88 CSD	Circle	Circle	Dia	3.53	3.58	0.05	0.09	+0.15/-0.08	Vertical	Pass
ItemNo 89 CSD	Circle	Circle	Dia	3.53	3.64	0.11	0.05	+0.15/-0.08	Vertical	Pass
ItemNo 90 CSD	Circle	Circle	Dia	3.53	3.62	0.09	0.11	+0.15/-0.08	Vertical	Pass
ItemNo 91 CSD	Circle	Circle	Dia	3.53	3.62	0.09	0.05	+0.15/-0.08	Vertical	Pass
ItemNo 92 CSD	Circle	Circle	Dia	3.53	3.61	0.08	0.05	+0.15/-0.08	Vertical	Pass
ItemNo 93 CSD	Circle	Circle	Dia	3.53	3.66	0.13	0.08	+0.15/-0.08	Vertical	Pass
ItemNo 94 CSD	Circle	Circle	Dia	3.53	3.64	0.11	0.04	+0.15/-0.08	Vertical	Pass
ItemNo 95 CSD	Circle	Circle	Dia	3.53	3.63	0.1	0.05	+0.15/-0.08	Vertical	Pass

Embrace Excellence – Vulcan Service, Quality and Value

Mechanical Seals | FEP/PFA Encapsulated 'O'-Rings | Gland Packing | Expanded PTFE Gasketing